



EUROPCAR/GALILEO VANS & TRUCKS GUIDE

October 2018





Introduction

We are pleased to inform you that Europcar is proposing Vans and Trucks in Galileo.

This guide will help you find information about how to book Vans and Trucks with Europcar

Vans & Trucks are only available on direct sell for the moment.

What's up with Europcar via Galileo?



Objective: Europcar wishes to increase Vans and Truck bookings through Galileo

Short description: Travel agents can book up to 8 truck types per country following standard Acriss codes on Galileo in Australia, Belgium, France, Germany, Italy, New Zealand, Spain and the UK.

New countries will be available soon:
Ireland, Norway and Portugal



Marketing page information for Vans & Trucks Galileo



For all information related to vans & trucks, enter: **CADEP**.

After typing CADEP, choose the topic you want to access such as “News”
Then enter CAD/and the topic name: CAD/NEWS and Enter

```
Agency
>CAD20SEPEP
CORPORATE POLICY - EUROPCAR                                20SEP
-----
02 CARS   CAR/VEHICLE TYPES          04 DROP   DROPOFF/ONEWAYS
06 GAS    REFUELING POLICY                08 INS    INSURANCE/COVERAGE
17 EQUIP  SPCL EQUIP RQSTS               19 MISC   MISCELLANEOUS INFO
20 NEWS   HOT NEWS ITEMS                 21 PYMNT  PAYMENT ACCEPTED
24 PHON   CORPORATE PHONES              25 POLY   POLICIES/RQIRMENTS
26 RATE   RATE INFORMATION              33 CLUB   CLUB/MEMBERSHIP
34 CONT   CONTACTS                      38 FORM   FORMATS
40 FQTV   FREQUENT TRAVELER            45 GOVT   GOVERNMENT RATES
>CAD/.      >CADMENU*PD·
>
```

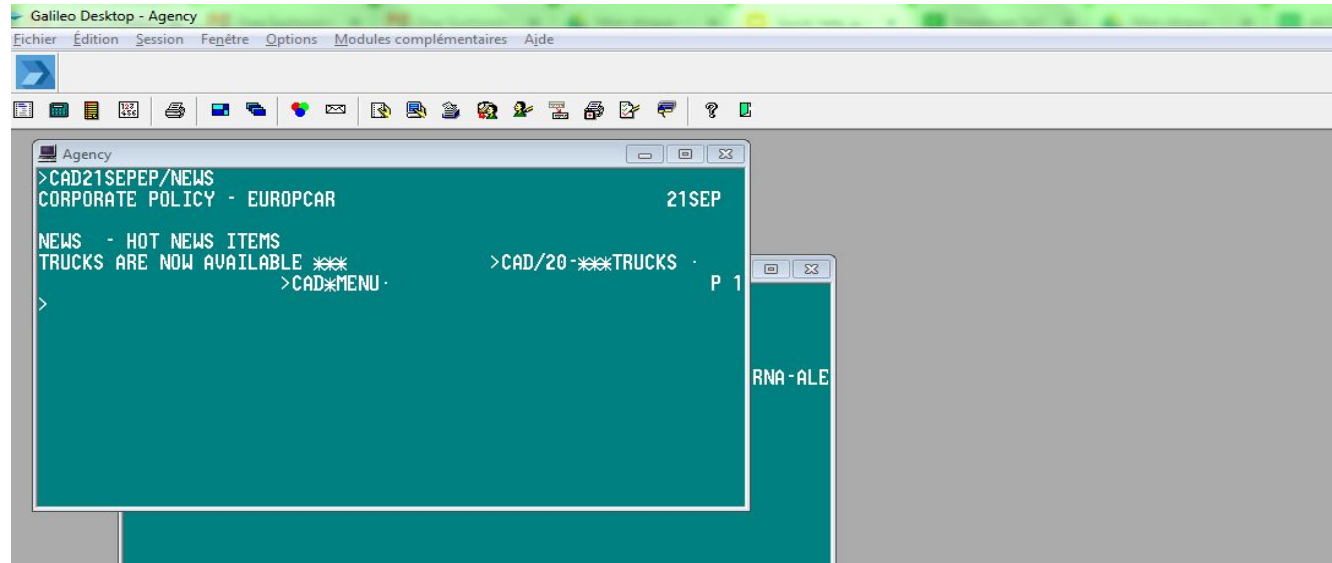
Marketing page - Galileo

Hot News Items -



After CADEP, type **CAD/** and the topic name: **CAD/NEWS** enter

Information details: Tab to the entry in red and all details appear

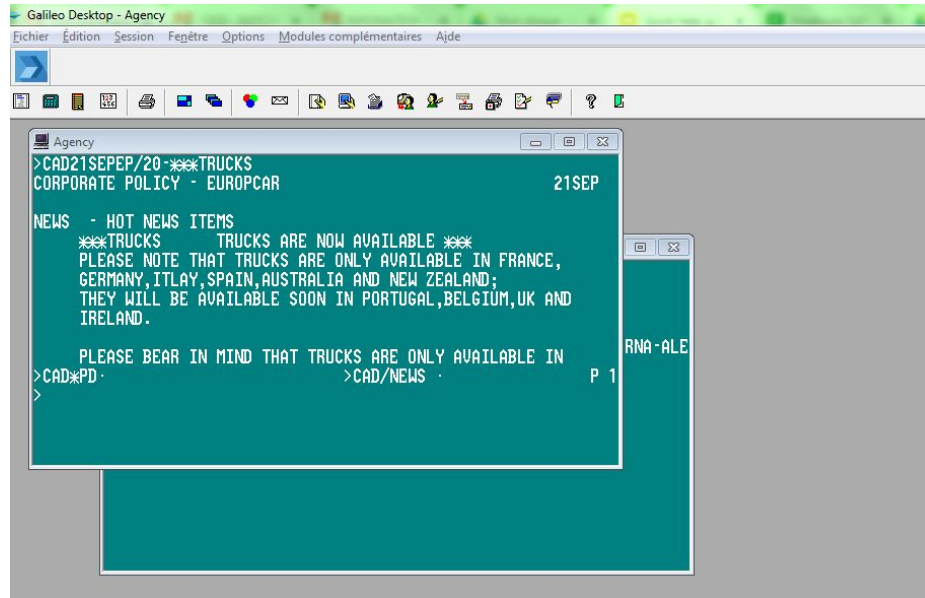


Marketing page - Galileo

Hot News Items



To see the next page please type CAD*PD



How to book with direct sell? - Galileo



Format to use - DIRECT SELL ONLY -
0CCREPNN1PAR20OCT-25OCTMKMR/ARR-1500/DT-1500/PUP-PARC06

```
Agency
1 CCR EP SS1 PAR 20OCT - 25OCT MKMR/BS-00000000/PUP-PARC06/ARR-1500/RC-HOLY/DT-1500
/NM-TEST IRIS
/RG-EUR253.00WK-0.23 KM 500 FK
/CF-1090191654
/AT-EUR253.00-0.23 KM 500FK 1WK
TC UNKNOWN - CONTACT EUROPCAR

TOTAL RENTAL CHARGE EUR 253.00 FOR 5 DY
INCL-TAXES,CDW,LAF,THW MAND-OPTL-PAI 9.17,
RSA 4.17,SLDW 22.50,MEDIUM 19.17,WWI 5.83,
SPAI 15.42,PREMIUM 26.67 *
OFFER HOTEL >HOA·
PRE >
```

End the PNR and the reservation

```
Agency
MCG52S/EP PAROU 70C9IK AG 0 20SEP
1.1TEST/IRIS
1. CCR EP HK1 PAR 20OCT-25OCT MKMR/RG-EUR253.00WK-0.23 KM 500
FK/BS-00000000/PUP-PARC06/ARR-1500/RC-HOLY/DT-1500/NM-TEST IRIS/CF-1090191654*
*** ADDITIONAL ITINERARY DATA EXISTS ***I·
FONE-PARM*12456
PRE >
```

Please bear in mind that trucks are available in direct sell only and not in shopping mode .

On request status management Galileo



Vans & trucks booked with “on request” status:

- If available, the booking will be confirmed by the station within 48 hours with a Europcar confirmation number.
- If not confirmed, this on request reservation status reverts to UC status meaning it is cancelled in the Europcar system. Travel agent will receive an EP message in TAs queues showing reservations status.
- If a modification is required by the customer, this is only possible via Galileo.
- If modification is done via Europcar system, there will be a Cancel/Rebook action with another confirmation reservation number.

DIRECT SELL ONLY -
REQUEST CASE -
0CCREPNN1PAR10NOV-12NO
VFKMR/ARR-1500/DT-1500/PU
P-PARC06

```
agency  
MG85GY/EP PAROU 70C9IK AG 0 04OCT  
1.1TEST/IRIS  
1. CCR EP PN1 PAR 10NOV-12NOV FKM/BS-00000000/PUP-PARC06/ARR-  
1500/DT-1500  
FONE-PARM*123465  
PRE >
```